



# Eaton ePDU



## User benefits:

- Eaton ePDUs are designed for Mission Critical reliability and server applications
- Support all enclosure power densities - Standard 0-4 to Ultra 15 kW and up
- Wide choice of outlets, including UK, Schuko, French, Nema, C13, C19
- Up to 3 types of outlet on a single zero U ePDU
- Solutions include Basic, Metered, Monitored and Managed technologies
- Vertical zero U, or horizontal 1U/2U configurations
- Custom product capabilities to meet the most demanding needs
- Integrated isolation mounting hardware provides maximum enclosure integrity
- High quality sockets ensure maximum reliability
- Multi-option mounting improves installation flexibility. Have confidence that the strip can be adapted to suit any on-site rack configuration.



## Enclosure Power Distribution Units

With today's changing technology and the demand for reliability, data centre professionals need sophisticated equipment to monitor consumption at a server level as well as at the data center level to understand and control what is happening within their infrastructure.

## Wide choice of models

Eaton ePDU®s feature the broadest portfolio in the industry across all power densities and technologies to satisfy the needs of every data centre. This complete suite of power products is designed specifically to help data centre IT managers understand their rapidly escalating power requirements.

The ePDU family includes models with a variety of power inputs and outputs to fit your power requirements. You can select from UK, Schuko, French and IEC (C13 & C19) output sockets and local (UK or Schuko), EN 60309, IEC (C14 & C20) or unterminated cords for termination directly to the output terminals of the UPS.

The ePDU range includes an extensive range of vertical Zero U products that do not occupy server space in racks as well as 1U and 2U formats. Environmental Monitoring options are also available.

From single to dual corded, four technology options, the broadest power range and the ability to manufacture ePDUs with custom arrangement of outlets (number and type) for every region, Eaton ePDUs are distinguished for their quality, dependability and versatility. All products are designed for the specific application with an emphasis on safety and reliability.

## Choose your Perfect Solution

Every data centre is unique – choose the right solution of enclosure power distribution units with three simple questions:

### 1. How much power do you need?

We have power solutions from Standard Power - 1 to 4 kW to Ultra High Power 15kW and up, including single phase 10A, 13A, 16A, 32A and 63A, 3 Phase 16A and 32A

### 2. Which inputs and outlets do you need?

ePDUs are highly configurable, allowing multiple outlet and plug configurations including 3 types of outlet on a single ePDU – UK, Schuko, French, Nema as well and C13 and C19

### 3. What functionality do you need?

We offer a broad range of functionalities including Basic, Metered, Monitored and Managed technologies

# EATON

Powering Business Worldwide

## Basic ePDU

Designed for reliable and cost effective power distribution, Basic ePDUs have the form factor and outlet choices to meet your needs. All ePDUs, including basic ePDUs, are made of rugged aluminium chassis and incorporate fully shrouded circuit breakers and switches.

- Rugged construction
- Data centre grade components
- Multiple mounting options
- Fully shrouded circuit breakers and switches
- High-density units available to support blade servers and network switches



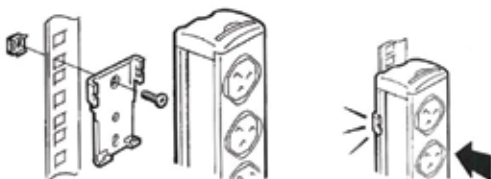
### Multiple Mounting Options



Side Mounting



End Mounting



Blind Mounting

# Eaton ePDU

## Metered ePDU

Metered ePDUs offer an easy-read digital ammeter for easy start-up and provisioning of servers. The display is large and bright and can be viewed from afar and through perforations in the cabinets. The ePDU assures easy management and monitoring for current requirements and future expansion.

- Local ammeter display enables load balancing and load segmentation
- Easy-read digital ammeter
- True RMS ammeter provides accurate power measurement



Example 1U and 2U configurations



High Density and dual input configurations available



Appropriate Breaker protection, or individually fused sockets available

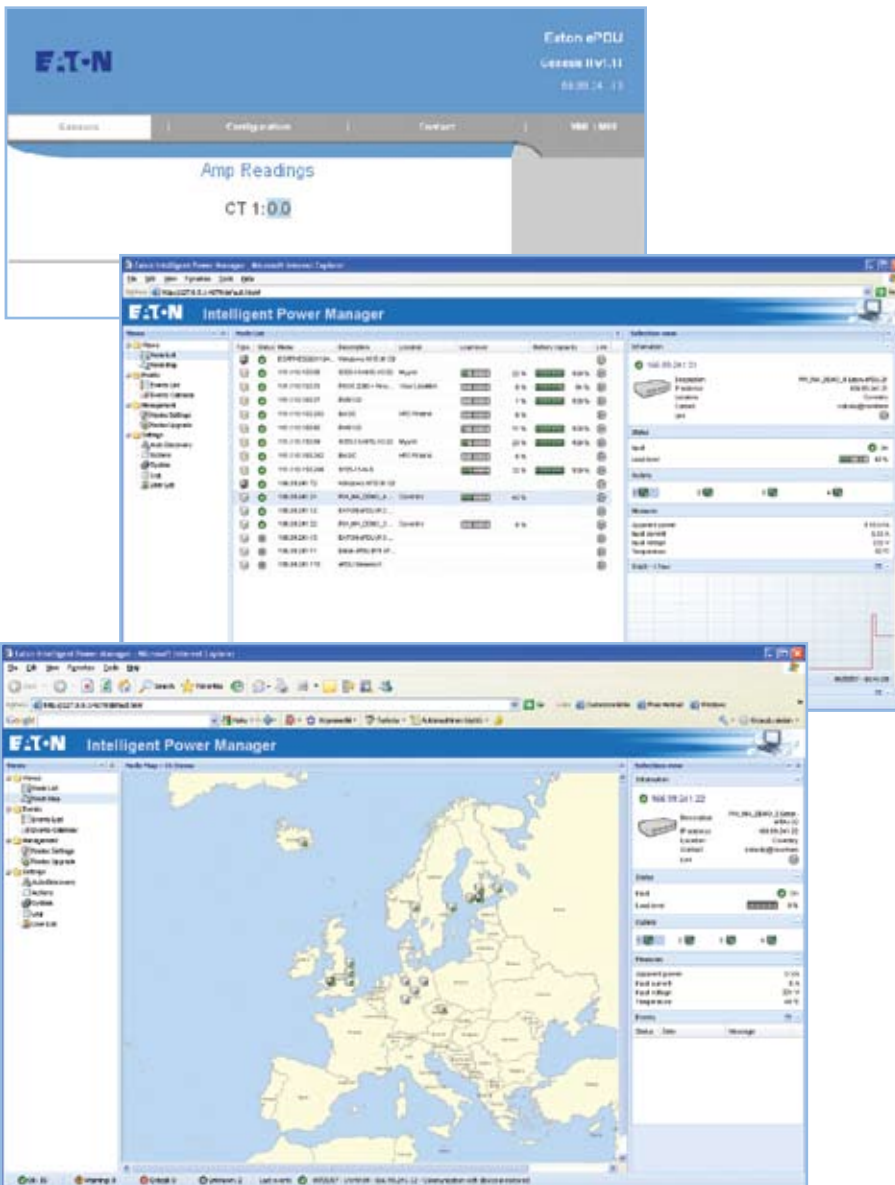


## Monitored ePDU

Monitored ePDUs offer customers the ability to remotely monitor the current draw over an Ethernet connection. This allows the user to aggregate the information from thousands of ePDUs in one location. All monitored ePDUs also include an easy-read digital ammeter for local provisioning and load balancing of servers.

The multi-channel Ammeter allows the monitoring of current on input and each branch circuit to ensure accurate load balancing. The Ammeter can manually or automatically scroll through up to eight circuits. Eaton ePDU's offer a reliable, scalable solution for your current and future requirements.

- Monitor current draw over an Ethernet connection
- Easy-read digital ammeter with up to 8 circuits
- Accurate load balancing
- True RMS ammeter provides accurate measurement
- Manual or auto scrolling through circuits



## Managed ePDU

Manage your power consumption to the individual server level. Managed ePDUs have unprecedented management and monitoring capabilities.

You can even monitor your power down to the individual outlet level to gain a full understanding of your data centre. User-definable grouping and sequencing of outlets with time delays allow controlled remote boot-up of servers and equipment. 256-bit encryption ensures secure communication and IPMI and SMASH CLI capability provides harmonised user access to computer hardware and ePDUs.

- Monitor and control individual outlets to manage the efficiency of the Data Centre at server level
- Comprehensive monitoring to the outlet level (Amps, Volts, Watts)
- Individual outlet switching enables remote reboot of servers
- User defined grouping and sequencing of outlets over multiple ePDUs (for A&B feed)
- Communication using SSL, TELNET, http, https, SNMP, IPMI, SMASH CLI, Serial 256-bit encryption security and in-built firewall
- Email capability for instant alert notification
- SNMP network management protocol enables you to monitor thousands of ePDUs in the network
- Optional temperature and humidity sensors available





### In-Line Monitored ePDU

Retrofit for existing PDUs without power metering.

Designed for new or retrofit applications, our in-line monitoring units provide simple single and dual fed local and remote monitoring solutions. Available with IP connectivity, as well as the Easy-Read digital ammeter.

- Adds power distribution monitoring to existing or Legacy data centres
- Available in 16A & 32A, single & dual circuits
- 19" horizontal mounting or 0U vertical mounting
- Single or Dual fed – allows A and B feeds to be monitored
- Fuse-less and breaker-less design: no inline break



## Supervise your ePDU power distribution with Intelligent Power Manager

Intelligent Power® Manager (IPM), is a new power monitoring software product from Eaton. It supports Eaton Monitored and Managed ePDU products as well as UPS, so customers can monitor and manage their power distribution via one interface and one IP address.

### Benefits:

- Monitor and manage multiple ePDUs and UPS systems over an IP network using a standard web browser
- IPM provides details of ePDU parameters, measurements and settings, from any point in the network, simply using the IP address of each ePDU
- Drill down to individual devices
- User-definable alarms including E-mail and SMS alerts through a single point
- Supervision and management of a whole system through a single user interface
- Configurable views
- Automatic discovery of devices
- Free of charge for up to 10 devices (ePDU or UPS)



## IPM Features and Benefits

IPM Key Feature	Benefit
Browser Based	IE 6 and 7; Firefox 2 and 3; Safari. The system can be installed locally, or on a main server and browsed to.
Auto Discovery	Fast installation - automatically detect devices on your network.
Security	Application has multiple password protected access levels and support for secure communications.
Remote access	Interface is web-based which enables remote monitoring and access to systems.
User definable tree structure	Simplifies management of multiple devices over multiple locations through grouping.
User definable graphics view	Helps in visualising physical locations of devices on maps or schematic drawings.
Aggregation of device alarms	Single interface to view all alerts. Minimise response time, reduce time to repair, maximise uptime. Alerts via mobile phones & e-mail.
Aggregated device views	Grouping of multiple 'like' devices simplifies management. Single interface accessible from anywhere on the network through a web browser.
Device firmware management	Reduce set-up and maintenance time of Network Management Cards by mass-configuring parameters and mass-upgrading firmware (not currently functional with ePDU).
Shutdown agent management	Enables safe shutdown of servers.
Automatic updates	Keeps the software at the latest version level.
Support for many device types	UPS and ePDU with network interface devices are visible and their individual web interfaces accessible for editing / configuration from a single view.
Customisable views	Lets users select the most relevant data for fast viewing and sorting on the interface.

**ePDU.com is Making Product Configuration as Easy as 1, 2, 3...**

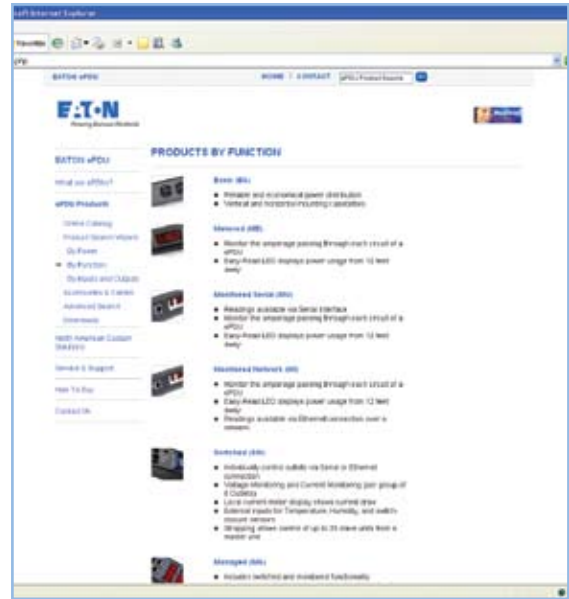
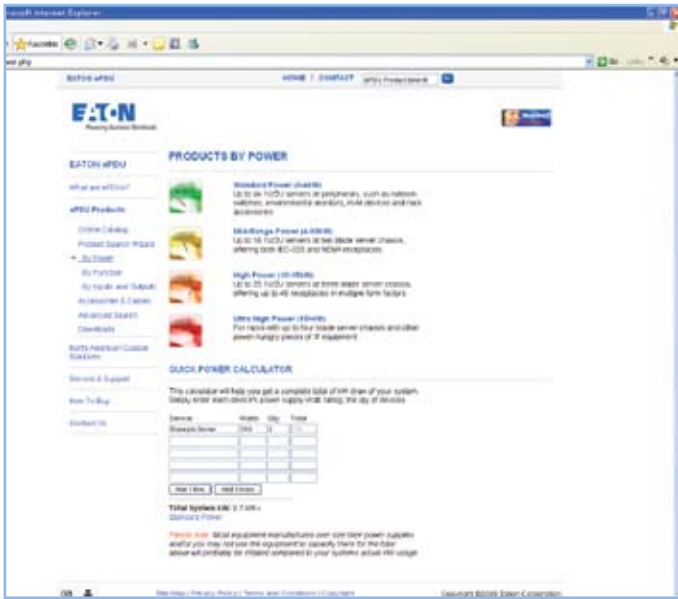
Making the right decisions from the start can make a difference in the dependability and efficiency of an infrastructure.

ePDU.com is helping make the selection of enclosure power distribution units, as easy as 1, 2, 3. This product configuration wizard is a simple interface that allows the customer to search over 1,000 products for the perfect solution.

This site allows the customer to ask themselves three key questions about their power needs.

- 1. How much power do you need?**
- 2. What functionality do you need?**
- 3. What inputs and outputs do you need?**

This innovative site allows the customer to explore features, benefits and learn basic fundamentals of ePDUs, as well as allows them to demo the live interface.



Eaton ePDUs are covered by a two-year limited factory warranty.



enquiries@hsups.co.uk • +44 1908 565656 • harlandsimonups.com  
 Harland Simon UPS Ltd • Bond Avenue • Bletchley • MK11 1TJ